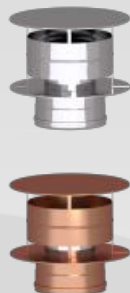
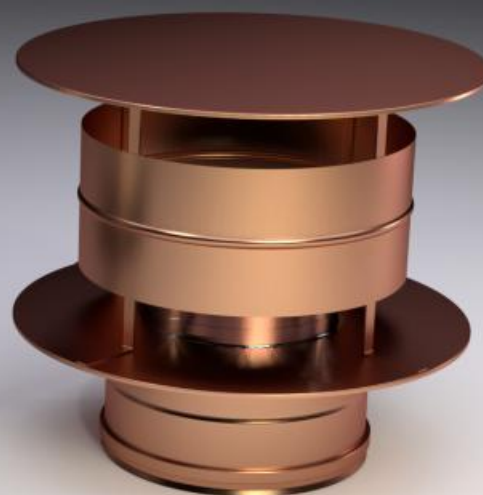
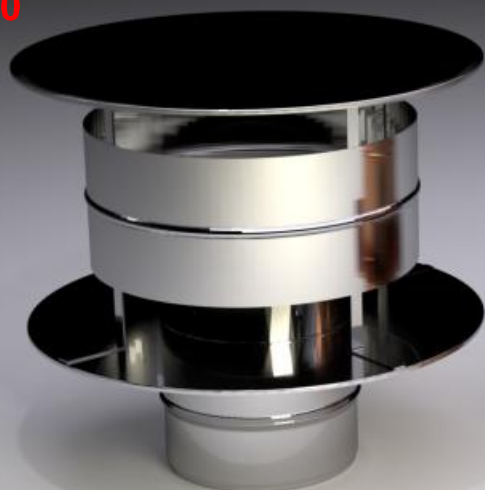


ANTARES CHIMNEY CAP

ART. 1900



STAINLESS
STEEL

COPPER

Usage of the product:

The Antares chimney cap is the flue terminal with the highest number of certifications. It gives excellent protection to the flue against infiltration of snow and rain water whilst permitting a constant emission of smoke fumes whatever the direction of the wind.

Installation instructions:

Install on the terminal part of the chimney flue. Fix by means of a flue clamp. Do not use a silicon sealant only. Installation of the chimney cap must be carried out by qualified personnel.

DAvailable for Single Wall flue pipes, both male and female, and for Double Wall flue pipes 25 mm insulation.

Conforms to UNI 7129/01 sez. 4-3-3 regulations regarding chimney caps.

EC Certifications in conformity with EN 1856-1 :

- Resistance to flow
- Technical conformity report "chimney cap protecting from rain"
- Technical conformity report "chimney cap protecting from wind"

Art. 1900 - single wall

ø	80	100	120	130	140	150	160	180	200	220	250	300
H	110	110	170	175	200	200	200	240	240	240	300	360
A	200	200	300	300	350	350	350	450	450	450	560	680

Art. 1900 DP - double wall

ø	80/130	100/150	130/180	150/200	180/230	200/250	250/300	300/350
H	110	110	175	200	240	240	300	360
A	200	200	300	350	450	450	560	680

