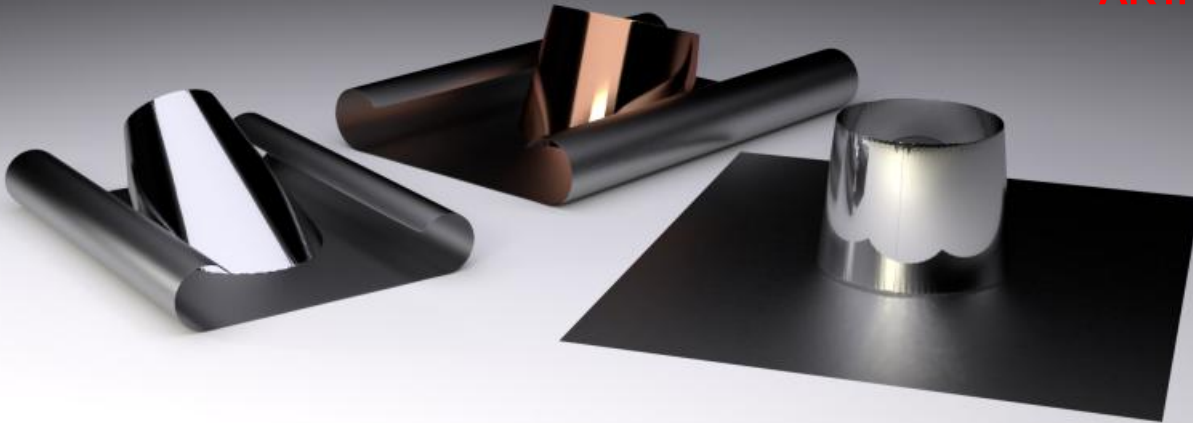


ALLUMINIUM BASE FLASHING

ART. 3000 AL



Usage of the product:

The flashing is a component which gives the final touch to the installation of a smoke flue. It is designed to facilitate joining the smoke flue to the roof or roofing material, rendering the area of the join watertight. It can be used on a flat roof or inclined surfaces until 60°. The cone of the flashing can be produced in stainless steel or copper.

The basal sheet is made of aluminium and it can be easily adapted to fit on the majority of roofing materials. For correct installation it should be fixed with a flashing sealant or Collar (Art. 3030) to hermetically seal the area where the chimney flue emerges.

Installation instructions:

Installation of the chimney cap must be carried out by qualified personnel.

CONE
STAINLESS
STEEL



CONE
COPPER

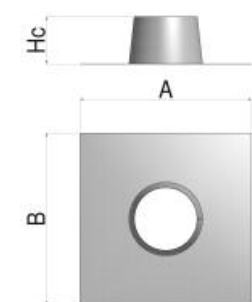


Art. 3000 AL

flat 0° - 5°

sloped 5° - 30°

sloped 30° - 60°



A

Ø	AxB	Hc	Ø	AxB	Hc	Ø	AxB	Hc	
80	550x450	130	80	550x450	100	80	550x450	100	
100		130	100		100	110			
120	650x550	130	120	650x550	120	120	650x550	120	
130		140	130		130	125			
140		140	140		140	130	140	130	
150		150	135		150	135	150	750x650	130
160		150	135		160	135	160	135	135
180		160	135		180	135	180	850x750	150
200	750x650	165	200	750x650	135	200	1000x800	160	
220		180	220		190	220	170		
230		210	230		190	230	180	1000x900	180
250		210	250		190	250	200	250	
300	850x750	220	300	850x750	190	300	1100x1000	220	
350		220	350		190	350	1300x1000	250	
400	1000x1000	220	400	1000x1000	190	400	1400x1000	250	