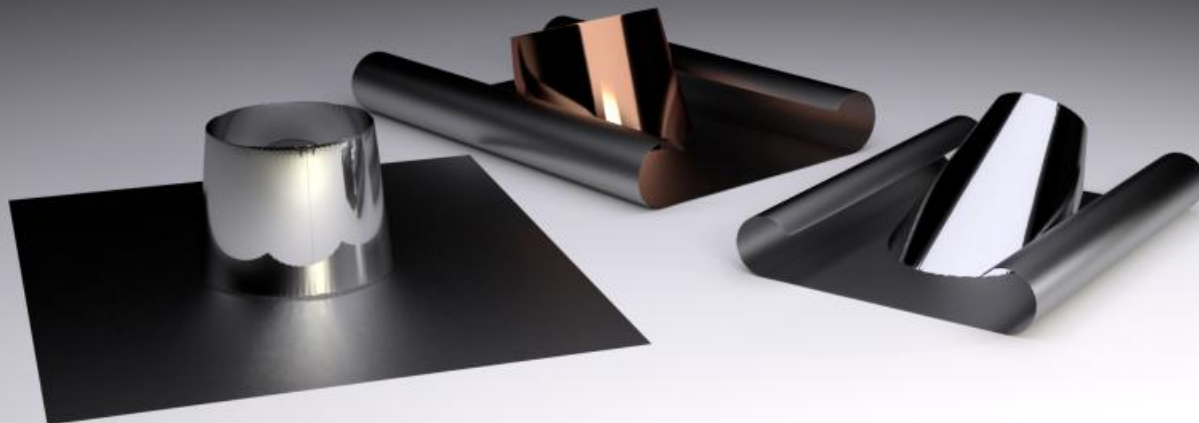


# LEAD BASE FLASHING

ART. 3000 PB



## Usage of the product:

The flashing is a component which gives the final touch to the installation of a smoke flue. It is designed to facilitate joining the smoke flue to the roof or roofing material, rendering the area of the join watertight. It can be used on a flat roof or inclined surfaces until 60°. The cone of the flashing can be produced in stainless steel or copper.

The basal sheet is made of lead and it result extremely adaptable to fit on the majority of roofing materials. For correct installation it should be fixed with a flashing sealant or Collar (Art. 3030) to hermetically seal the area where the chimney flue emerges.

## Installation instructions:

Installation of the chimney cap must be carried out by qualified personnel.



CONE  
STAINLESS  
STEEL



CONE  
COPPER

## Art. 3000 PB

flat 0° - 5°

sloped 5° - 30°

sloped 30° - 60°

flat 0° - 5°  
and sloped 5° - 30°  
small

Ø	AxB	Hc	Ø	AxB	Hc	Ø	AxB	Hc	Ø	AxB
80	700x500	130	80	700x500	100	80	700x500	100	80	600x500
100		130	100		100	110		100		
120	1000x500	130	120	1000x500	120	120	1000x700	125	120	700x500
130		140	130		130	130		130		
140		140	140		140	130		140	140	
150		150	150		150	130		150	150	
160	1000x700	150	160	1000x700	135	160	1000x700	135	160	1000x700
180		160	180		135	180		150	180	
200	1000x800	165	200	1000x800	135	200	1000x800	160	200	1000x700
220		180	220		190	220		170	220	
230		210	230		190	230		180	230	
250		205	250		190	250		200	250	
300	1000x1000	220	300	1000x1000	190	300	1100x1000	220	300	1000x1000
350		220	350		190	350		250	350	
400		220	400		190	400		250	400	

