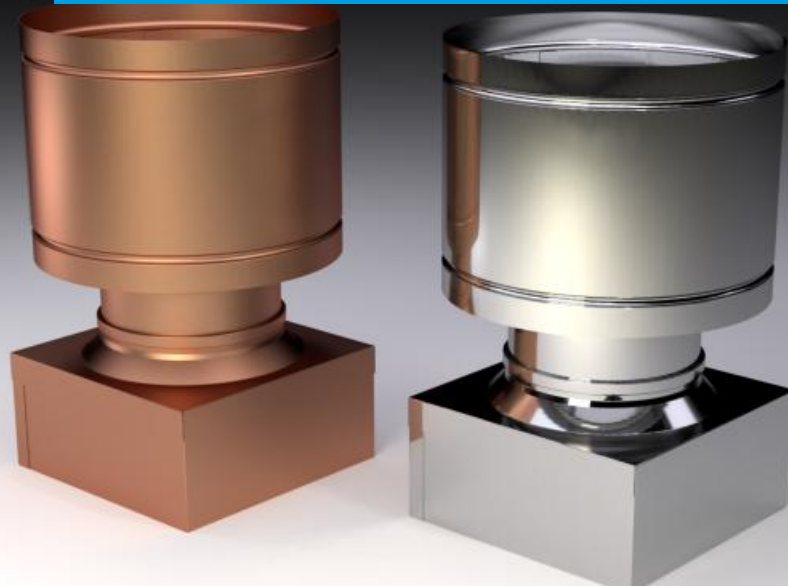


MANTELLO CHIMNEY CAP SQUARE BASE

ART. 1260



Usage of the product:

The Mantello chimney cap protects the smoke flue from infiltration by rain water and snow whilst allowing the free emission of smoke even in the presence of high wind.

Installation instructions:

Install on the terminal part of the chimney flue.
The terminal cap has to be well fixed according to the chimney system building material. Do not use a silicon sealant only. Installation of the chimney cap must be carried out by qualified personnel.

STAINLESS
STEEL



COPPER

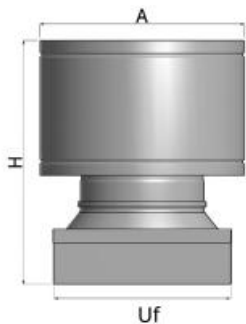


Conforms to UNI 7129/01 sez. 4-3-3 regulations regarding chimney caps.

EC certification in conformity with EN 1856-1:

- Resistance to flow.
- Technical conformity report "Chimney cap protecting from rain".

square base - **Art. 1260**



mm	220x220	270x270	320x320	320x420	370x370	420x420	420x520	520x520
H	375	395	455	455	455	455	515	515
A	260	300	370	370	370	420	470	470
Uf	150	180	220	220	220	250	300	300