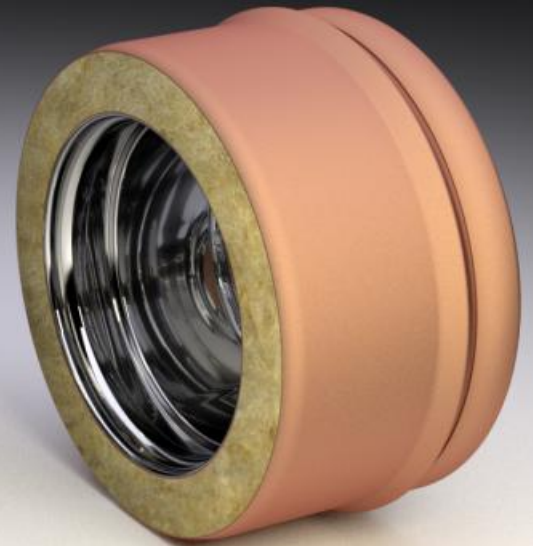


# MOISTURE DRAIN

**NEW**

ART. 4000



## Usage of the product:

The Moisture Drain is a type of valve plug used to drain condensed and rain water, a component used at the base of any stack pipe/chimney/conduit. It is inserted under a T-connector at 90° or 135°, flue pipe and duct, wall bracket or loft stand.

## Installation instructions:

When installing exhaust pipes and fittings, it is advisable not to force the threaded sleeve. During regular maintenance checks, inspect the free outflow, this may also be done by pouring water into the cap itself. If the fumes from the stack pipe/chimney derive from pellet or wood, it is recommended to significantly increase maintenance time intervals. Comply with the direction of the fumes.



STAINLESS  
STEEL



COPPER

### Art. 4000 - single wall

| Ø  | 80  | 100 | 120 | 130 | 140 | 150 | 160 | 180 | 200 | 220 | 250 | 300 | 350 | 400 | 450 |
|----|-----|-----|-----|-----|-----|-----|-----|-----|-----|-----|-----|-----|-----|-----|-----|
| H  | 108 | 110 | 112 | 113 | 114 | 114 | 114 | 117 | 119 | 120 | 123 | 128 | 132 | 136 | 141 |
| Hf | 84  | 86  | 88  | 89  | 90  | 90  | 90  | 92  | 95  | 96  | 99  | 103 | 107 | 112 | 116 |

### Art. 4000 DP - double wall

| Ø  | 80/130 | 100/150 | 130/180 | 150/200 | 180/230 | 200/250 | 250/300 | 300/350 | 350/400 | 400/450 |
|----|--------|---------|---------|---------|---------|---------|---------|---------|---------|---------|
| H  | 112    | 114     | 117     | 120     | 121     | 123     | 127     | 132     | 136     | 140     |
| Hf | 88     | 90      | 92      | 95      | 97      | 99      | 103     | 107     | 112     | 116     |

